

Maryland Hospitals' Quality- Based Reimbursement Project – The Appropriateness of Care Model

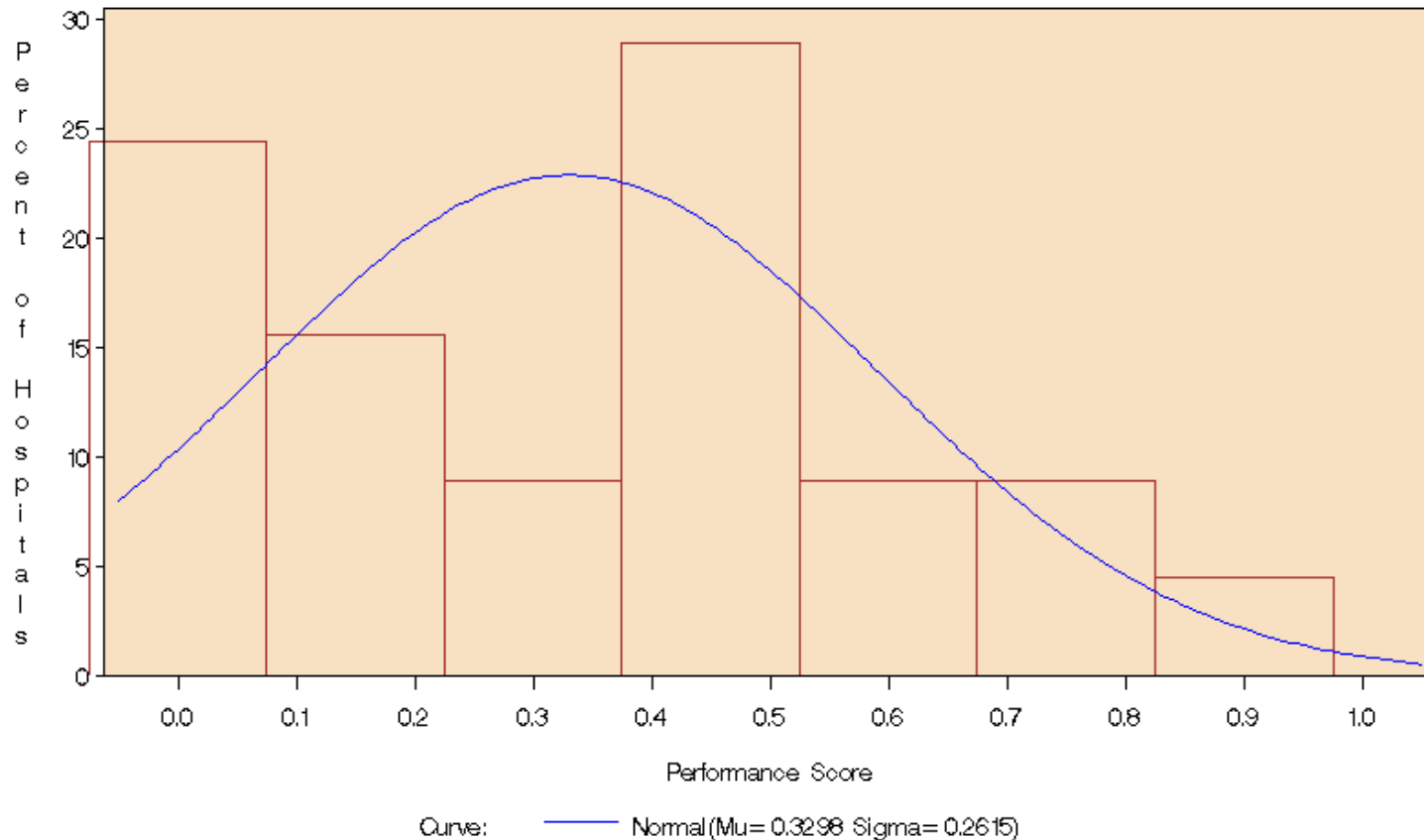
presented by: Grant A. Ritter,
Heller Graduate School, Brandeis University,
Feb 8, 2008

Appropriateness of Care Model

- Attainment Component

Density of Performance Scores (Benchmark = top decile mean, Threshold = median)

Appropriateness of Care Scores
Attainment in Four Diagnosis Groups

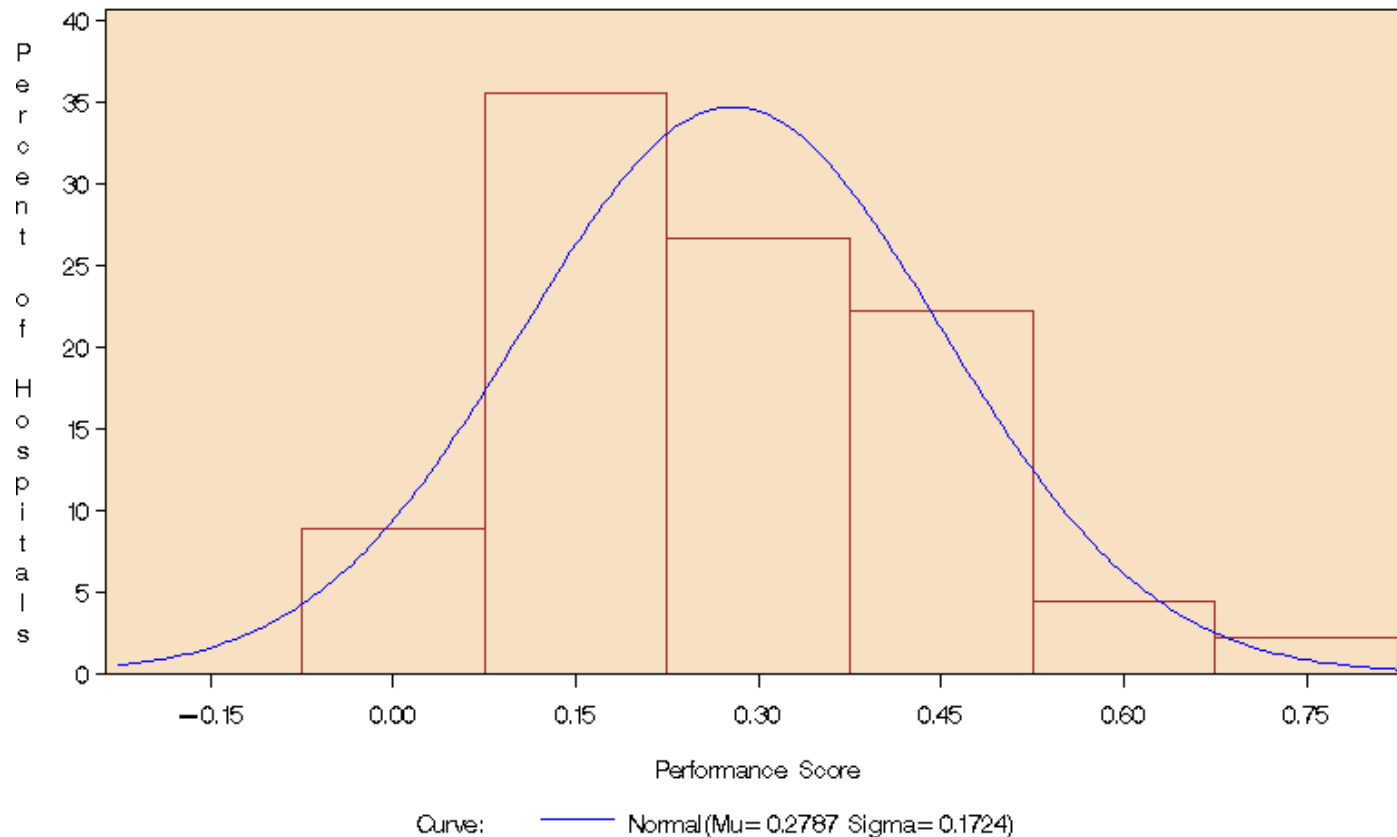


Appropriateness of Care Model - Improvement Component

Density of Performance Scores (Benchmark = top decile mean, Threshold = median)

Appropriateness of Care Scores

Improvement in Four Diagnosis Groups



Appropriateness of Care Model

- Combination of Components

Density of Performance Scores (Benchmark = top decile mean, Threshold = median)

Appropriateness of Care Scores

Higher of Attainment or Improvement in Four Diagnosis Groups

