

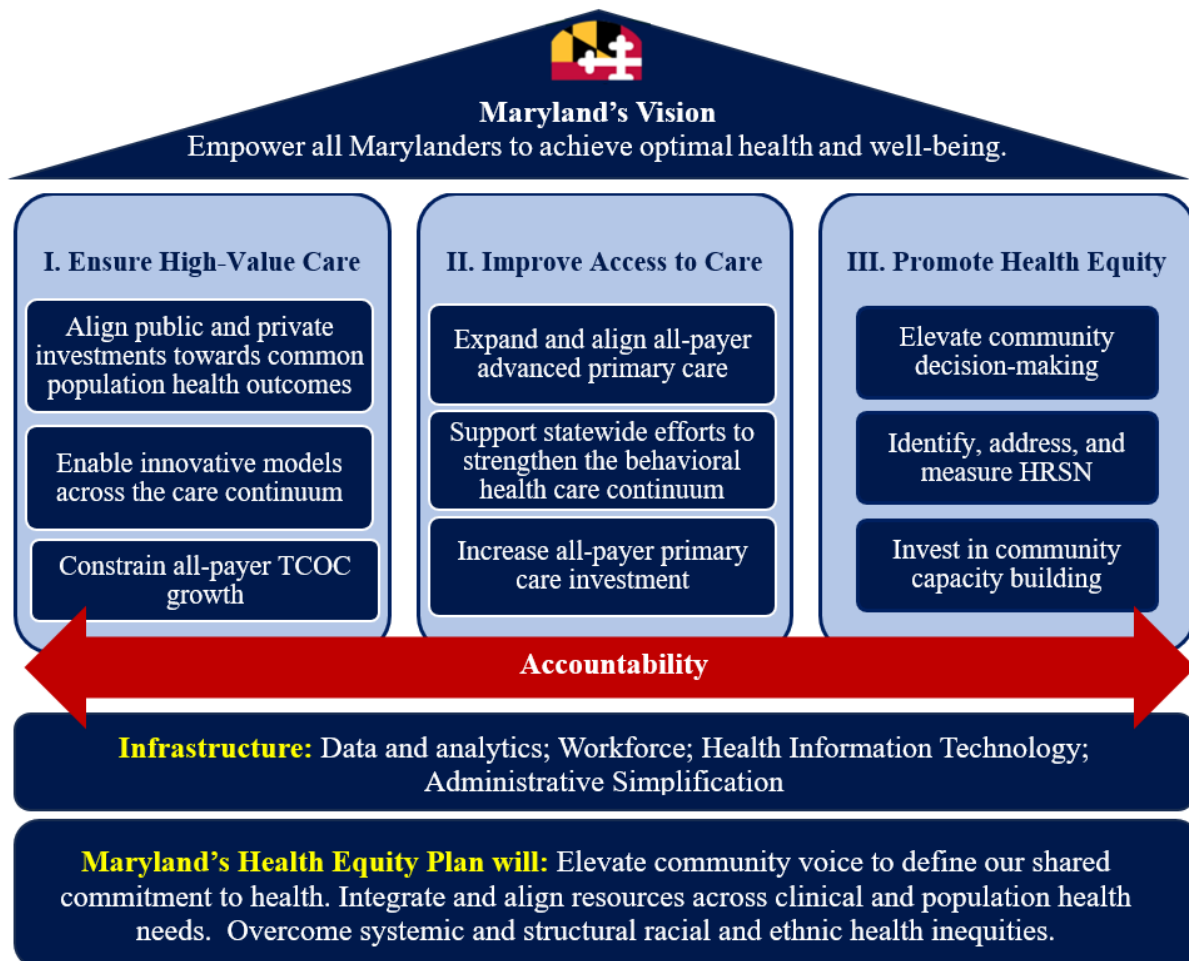
## AHEAD Furthers Our Vision of Optimal Health and Well-Being for Marylanders

The AHEAD Model advances our vision of empowering all Marylanders to achieve optimal health and well-being. As the end of the Total Cost of Care (TCOC) Model approaches, AHEAD benefits Maryland as the pathway to continue our long-term commitment to improving statewide healthcare quality, health outcomes, and health equity - all while controlling cost growth.

**Through AHEAD, we will bridge the health care, population health, and social sectors as well as the public and private sectors to implement the solutions Marylanders need, as identified by community members themselves.**

Maryland will leverage AHEAD Model tools to promote health equity, ensure high-value care, and improve access to care, in order to achieve our vision of high value, equitable, and excellent health delivery system.

### Maryland's Vision Under AHEAD



**Ensuring High-Value Care:** To ensure high-value care, we will align public and private investments towards common population health outcomes, enable innovative models across the care continuum, and constrain all-payer TCOC growth to sustainable levels.

Our driving principles include benchmarking our success according to outcomes, evolving and evaluating all-payer hospital global budgets to align with equity-centered population health goals inclusive of community health needs, and addressing challenges across the health care system such as post-acute care quality and alignment.

**Improving Access to Care:** To improve access to care, we will expand and align all-payer advanced primary care, support statewide efforts to strengthen the behavioral health care continuum, and increase all-payer primary care investment.

Our driving principles include recognizing primary care as the foundation of our health care delivery system; integrating behavioral health into primary care; and growing, attracting, and retaining a diverse primary care workforce through investment in provider support multi-payer alignment.

**Promoting Health Equity:** To promote health equity, we will elevate community decision-making; identify, address, and measure health-related social needs, and invest in community capacity building.

Our driving principles are centering community knowledge and solutions, empowering community voice, and prioritizing community-based alternative funding models.

The principle of **accountability** will underlie our approach to all three of these strategies. Our **infrastructure** investments will support the actions needed to achieve our vision, including:

- **Workforce**, a foundational issue to promote health equity, ensure high-value care, and improve access to care.
- **Health information technology, data, and analytics.** We will strengthen and grow this area to achieve intentionality, transparency, and collaboration across the care continuum.
- **Administrative simplification for health care providers**, supported by multi-payer alignment across payment models and quality measurement.

**Maryland's Health Equity Plan** is the foundation for all actions and investments under AHEAD. We will develop our State Health Equity Plan to elevate community voice in defining our shared commitment to health; integrate and align resources across clinical and population health needs; and work to overcome systemic and structural racial and ethnic health inequities.

Maryland's request for AHEAD Model Cooperative Agreement funding focuses on health equity and health-related social needs. This includes funding for: (1) Five regional community-based population health hubs to support community-level population health investment and efforts to address health-related social needs; (2) Community grants to address population health and health-related social needs; and (3) Technology for statewide coordinated health-related social needs screening and referral.